



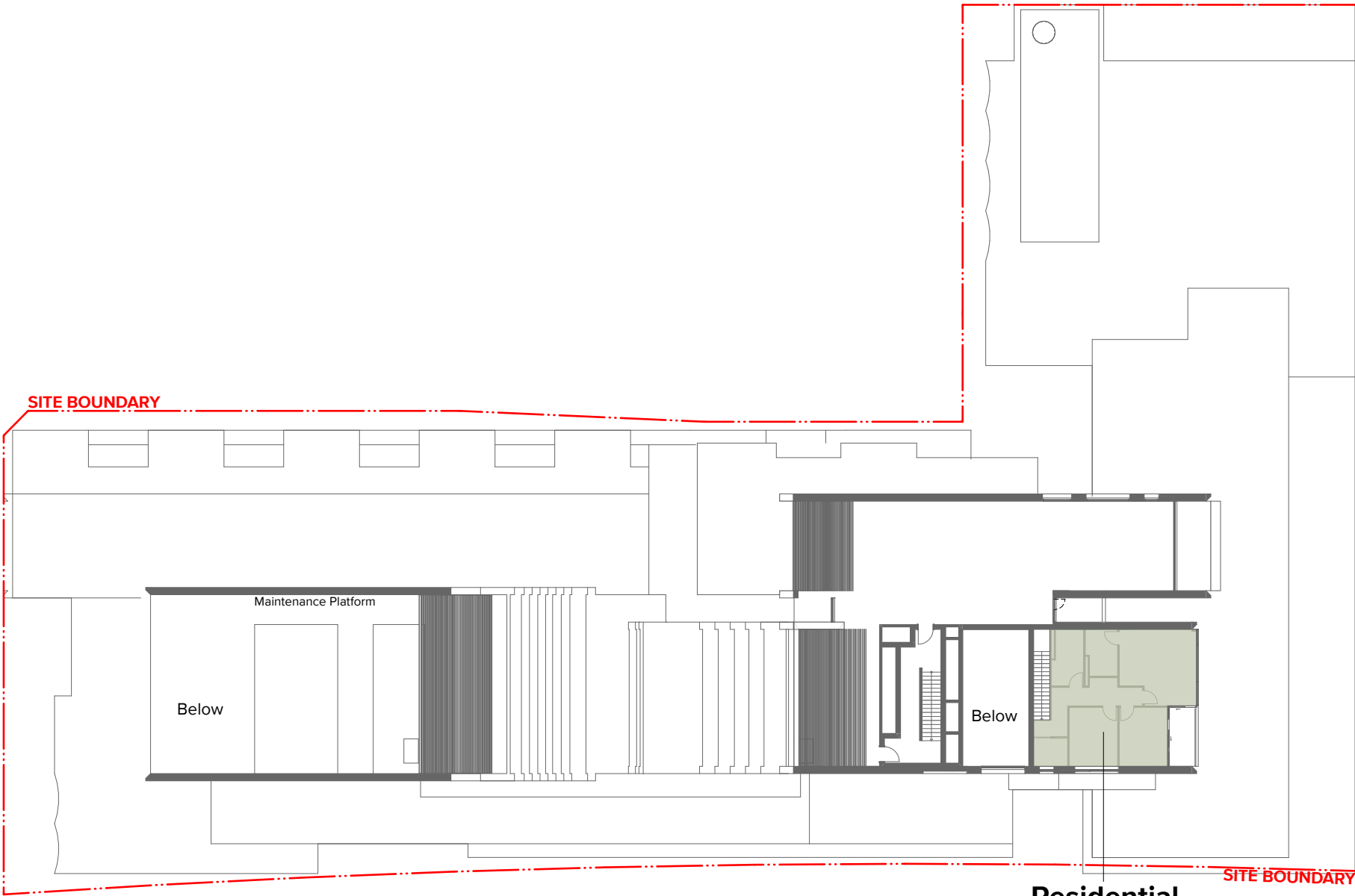
Level 17
GFA : 546m²



Level 18
GFA : 527m²



Level 19
GFA : 335m²



Level 20
GFA : 73m²

GFA Calculation Table

Level	Area m2
Basement 01	7
Ground Floor Rawson Street	1,090
Ground Floor Beecroft Road	1,365
Level 01	1,529
Level 02	1,354
Level 03	1,169
Level 04	976
Level 05	979
Level 06	979
Level 07	978
Level 08	771
Level 09	699
Level 10	712
Level 11	701
Level 12	697
Level 13	688
Level 14	607
Level 15	595
Level 16	563
Level 17	546
Level 18	527
Level 19	335
Roof Level	73
	17,940 m²

Gross Floor Area
Definition : Gross floor area means the sum of the floor area of each floor of a building measured from the internal face of external walls, or from the internal face of walls separating the building from any other building, measured at a height of 1.4 metres above the floor, and includes—
a) the area of a mezzanine, and
b) habitable rooms in a basement or an attic, and
c) any shop, auditorium, cinema, and the like, in a basement or attic, but excludes —
d) any area for common vertical circulation, such as lifts and stairs, and
e) any basement—
i) storage, and
ii) vehicular access, loading areas, garbage and services, and
f) plant rooms, lift towers and other areas used exclusively for mechanical services or ducting, and
g) car parking to meet any requirements of the consent authority (including access to that car parking), and
h) any space used for the loading or unloading of goods (including access to it), and
i) terraces and balconies with outer walls less than 1.4 metres high, and
voids above a floor at the level of a storey or storey above.